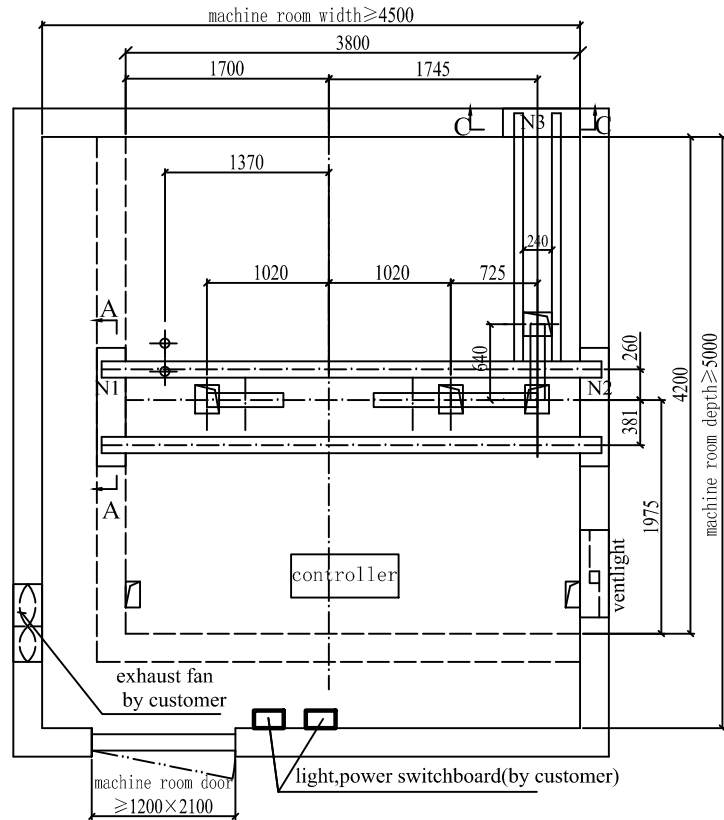
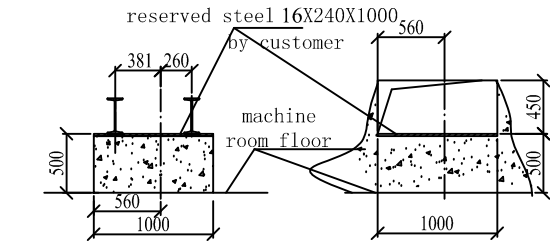


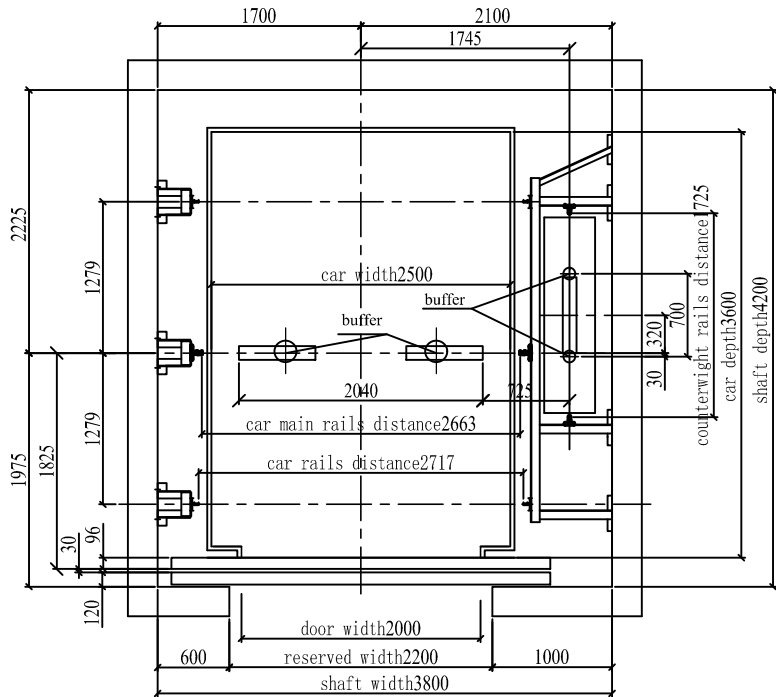
Elevation



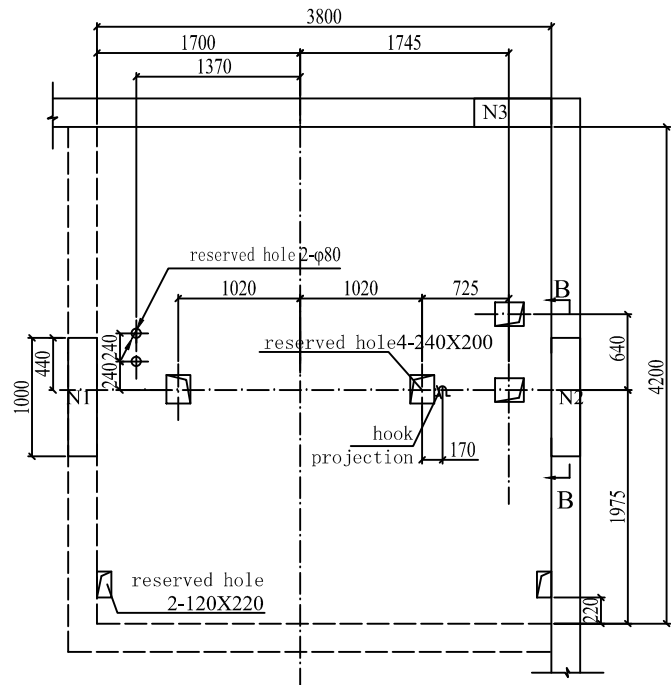
machine room layout



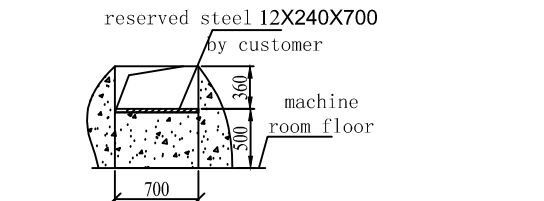
A--A section B--B section
(C30concrete, by customer)



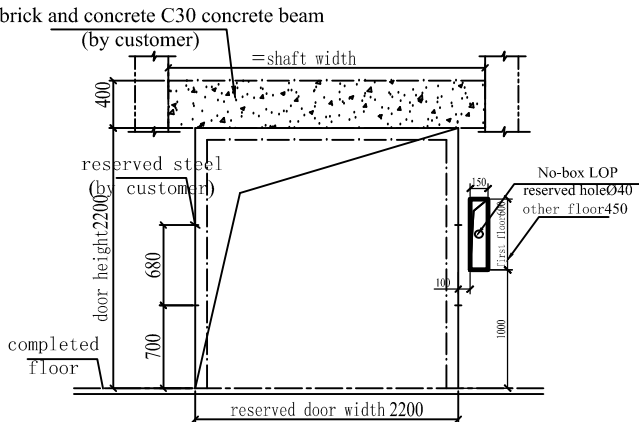
shaft layout



machine room hole view



C--C section
(C30concrete, by customer)



landing door hole view

We agree to produce according to this drawing		
Reviewer	Principal	Company
project		
company		

Specifications		
model	THJ5000/0.25	THJ5000/0.5
capacity (kg)	5000	5000
speed (m/s)	0.25	0.5
speed adjust mode	VVVF	VVVF
door opening	center two panels	center two panels
traction pulley(mm)	φ725	φ725
car top pulley(mm)	φ640	φ640
counterweight pulley(mm)	φ640	φ640
power(kw)	18.5	25
current(A)	37	49.5
car(mm)	2500(W)X3600(D)	2500(W)X3600(D)
car height(mm)	2200	2200
landing door(mm)	2000X2100	2000X2100
min floor space(mm)	2850	2850
stop(floor)	4	8
travel height (m)	30	30
overhead height(mm)	≥4600	≥4600
pit depth(mm)	≥1600	≥1600
power	voltage(V)	380
	frequent (Hz)	50
	capacity(kVA)	22.5
	beam N1	249000
	beam N2	137000
support	beam N3	67000
	car N4	225000
	counterweight N5	175000

- Note
- brick and concrete shaft according to the drawing bury the steel plate in advance, plate parts please see the drawing. If not bury in advance, add beam between each floor. Guide rail support vertical distance not over 1.8m. When the distance between two landing sills over 11m, need a safety door.
 - hoistway pit can bear the load shows in the melt pit drawing, if there's space people can reach in the pit, the other land of the pit minimum designed by 5000N/m' load, and counterweight buffer(N2) installed in the solid land(by client)
 - the shaft inside ambient temperature at +5~+40 °C
 - please meet the following requirements when you use expansion bolt to install the elevator guide rail support: a. concrete wall is solid and strong, the compressive strength not below 21Mpa b. the thickness of the concrete wall over 120mm
 - Shaft should keep dry and isolate from the water tank and flue. And it should be well-ventilated. The top of the shaft should have insulating layer and enough lighting. In cold region, it should take heating into consideration.
 - working condition for elevator: A. the altitude should not higher than 1000m. B. supply voltage: relative to rated voltage, the range should be controlled in +~7% C. the average max relative humidity of the elevator working place during the wettest month should be 90%. At the same time, the lowest temperature should be less than 25 degree centigrade D. there should have no corrosive and flammable air or conductive dust in the environment.
 - the shaft should keep vertical. It only allows positive deviation. The deviation of hoistway (whose total height is ≤30m) is as follows 0→+25mm, for shaft total height ≤60m, deviation is 0-35mm, for shaft total height ≤90m, deviation is 0-50mm.
 - the door size is the one after decoration. So there should have a slack in the building. And doing the decoration after installing the door. The power supply of cabin are all provided by the customer.
 - If there is equipment like water pipe, the customer should negotiate with our company in advance. The entrance of the room should be clear. The width for aisle and stair to the room should not be less than 1200mm, and the slope should not higher than 45 degree, the top of the shaft should install air vent and the size should be larger than 1% of shaft horizontal section area.
 - Independent ground lead must be connected to machine room switchboard

Floor Height(mm)			
Mark	QTY	Sign	Date
Des ign		Con firm	
Revi ewer		Date	
Drawing No			
Civil engineering guidance			
SMKH5000			